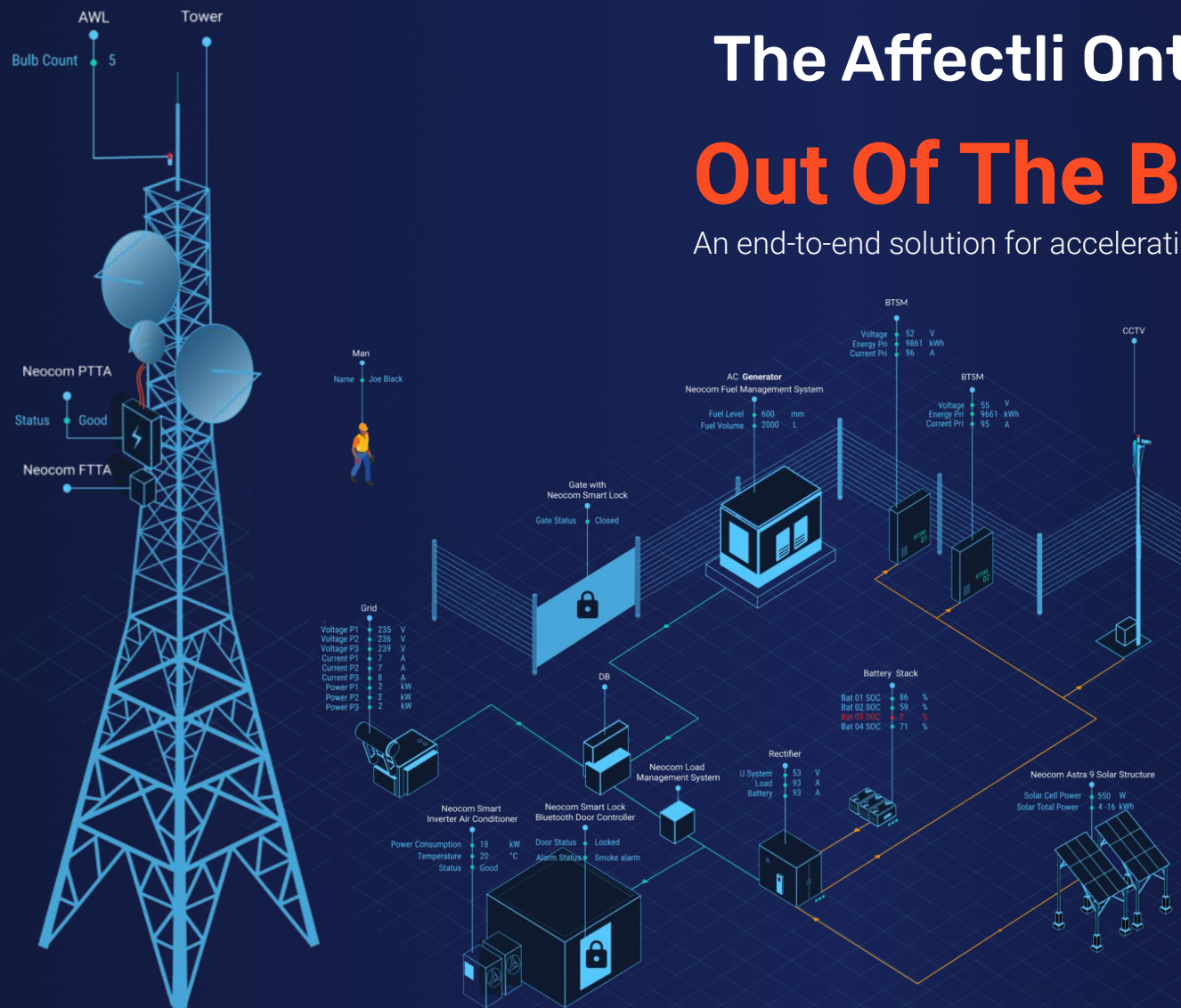


The Affectli Ontology Platform

Out Of The Box TowerCo

An end-to-end solution for accelerating growth & maximising revenue



Own your data.
Orchestrate everything.



Imagine a World in which Companies own their data,
and with a push of a button, orchestrate everything...



affectli

Own your data.
Orchestrate everything.

 **affectli** Own your data.
Orchestrate everything.



Own your data. Orchestrate every**thing**.

Cutting-edge technology for Mission Critical Environments

Affectli is an award-winning **Ontology** solution and flagship product of Mi-C3 International that is designed to improve efficiencies across the entire value chain of any organisation.

"What Android & iOS is to your smartphone, Affectli is to your business..."
~ CEO & Founder, Glen Scott

Our disruptive, trusted software solution is a powerful **Business Operating System** that allows organisations to realise their full potential. Not only does Affectli allow you to take full control and ownership of your data, we give you the ability to **orchestrate everything across your organisation** through a **single pane of glass** that supports informed decision making through **Situational & Actionable intelligence using real-time data**.

- ✓ Reduce operating costs
- ✓ Improve efficiencies
- ✓ Increase profits
- ✓ Build long-term sustainable growth

Mi-C3 is at the forefront of Global Digital Transformation



Award-winning & Trusted Technology

Malta Communication Authority Business Awards 2008: Best B2B Application	World Summit Awards (2018) Business & Commerce Category: Best B2B Application	SOC 2®, Type 2 Examination & Report Obtained	ISO 27001:2013 Information Security Management System	ISO 9001:2015 Quality Management Systems	ISO 2000-1:2011 Service Management System

We Take Data Security Seriously!

The affectli Ontology Orchestration

We **integrate existing systems, datasets & unlimited IoT devices** to deliver a **single pane of glass** with **consolidated, real-time information**.

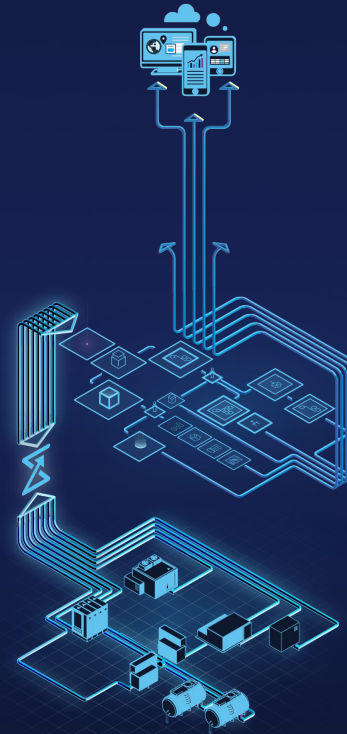
Affectli is designed for **data sovereignty**, whilst ensuring that **the right people get the right information at the right time**.

Our technology is:

- ✓ Single stack software solution
- ✓ Scalable
- ✓ Agile
- ✓ Multi-tenancy
- ✓ Device Agnostic
- ✓ Browser Independent
- ✓ Industry Agnostic
- ✓ Market Vertical Agnostic

Under The Hood

Functionality Modules



COMMUNICATION

Chat & Broadcast

Instant messaging
Contextual communication
Scheduled notifications

AI / M2M

Data In Motion AI
Data at Rest AI
AI Engine Agnostic
AI Model Agnostic

BIG DATA

Data Ingestion
Data Lake /
Data Pool Correlation

MAPS

Situational Awareness

Semantic relationships
Pivot on any Data Point
Heat Maps
Custom Map Layers

ORCHESTRATION

Intelligent Workflow
Automated Process Management
Real-time identification / Alerting
Task Management

INSIGHTS

Data Visualisation

Graphing
Mapping
Digital Twins
Dashboards
Analytics

IoT

Hardware / System Agnostic
Support ALL known digital
protocols & standards

TowerCo / Telco end-to-end services

Digitise workflow processes and future proof your organisation with apps that are infinitely scalable, agile and customisable to meet your exacting operational requirements.

Choose from a selection of Out-The-Box (OTB) apps or develop your own.

Affectli has proven to be hugely successful at scale to monitor and process real-time data from millions of endpoints, as well as orchestrate operational efficiencies across thousands of sites for the largest TowerCo companies in Africa and throughout Europe.

TowerCo/Telco Suites each contain multiple Apps/Processes.



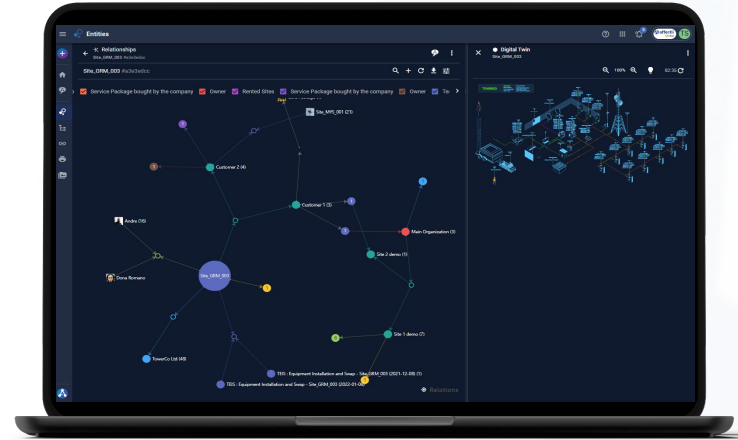
- Asset Management
- NOC Essentials
- Operations Field Functions
- Operations Planning
- Operations Projects
- Operations Power & Billing
- Web Customer Portal Suite
- Site Acquisition
- Landlord Management
- Customer Lease Management
- Site Build Management
- Change Management
- CEO Dashboards & Reports

Semantic Ontology

Simply put: Semantic Ontologies show how **EVERYTHING** within your organisation is connected.

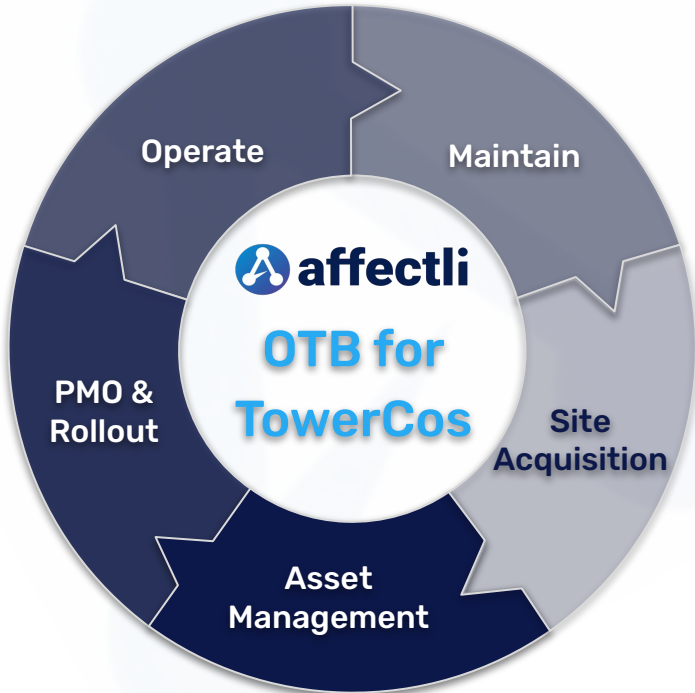
Our highly advanced technology applies Semantic Ontology to **connect every datapoint** within our platform.

These connected data points give you the ability to not only view **layers of information in real-time**, but it can also be pivoted and visualised with the simple click of a button.



View real-time data on Relationships for any Entity, including Profiles, Tasks, Digital Twins and more..

affectli OTB Accelerators for TowerCo



The OTB for TowerCo Solution Modules include:

Site Acquisition

- Web Customer Portal Suite
- Site Permitting and Acquisition
- Lease Management: Landlord & Customer

Asset Management

- Site Audits
- Tower Audits
- Energy Management/Optimisation

PMO & Rollout

- Site Build Management
- Site Equipment Upgrades
- Colocation

Operate

- NOC Incident Management
- Site Access
- Site Key Management
- 2D Digital Twins Modelling
- 3D Digital Twins using Drones
- Billing for Customer & Vendor

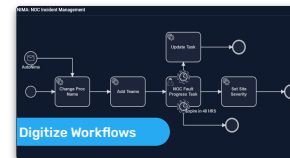
Maintain

- Planning of Site Operations Function
- Operations Field Functions

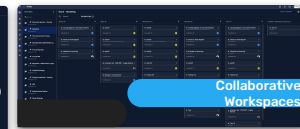


Highlights & functionality include:

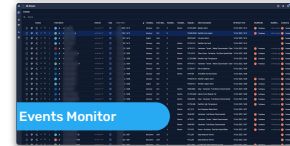
- **Extensive Integration capabilities** - This is not a rip & replace solution! Affectli is hardware and system agnostic that supports all known digital protocols and standards, allowing you to sweat existing assets and consolidate any number of new & existing systems, devices and datasets.
- **Multi-tenancy** functionality with Market-based separation capabilities to ensure data sovereignty, whilst delivering the right information to the right people at the right time.
- **Semantic Ontology** that connects every data point, and allows for real-time data to be pivoted & visualised with the simple click of a button.
- **Big Data** capabilities for processing unlimited data points.
- **Data Structuring** through our powerful Mi-Stream engine that feeds into a real-time Events Monitor.
- **AI / M2M** for machine learning and predictive analytics.
- Business Process Management tools that **digitise Workflows & Business Processes** to ensure standardisation and compliance across the organisation.
- Maps that provide real-time **Situational Awareness** and allow you to pivot any data point.
- **Digital Twins** with real-time data and layers of information that are drillable into granular detail.
- **Communication tools** for end-to-end encrypted contextual collaboration, including Instant Messaging; Contextual Communication within Tasks & Entities; as well as Broadcast notifications.
- **Document Storage** solution for a number of supported files that is linked directly to any Entity, Ticket, Task and more.
- **Insights tools** for Graphing, Mapping, Reporting, Super Analytics & CEO Dashboards
- And more..



Digitize Workflows



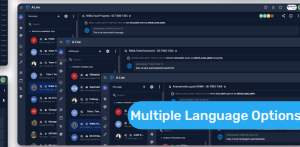
Collaborative Workspaces



Events Monitor



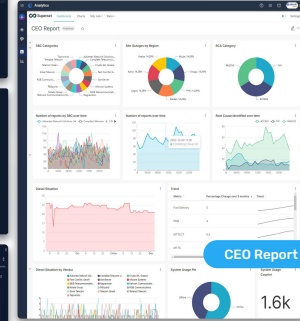
Broadcast Messages



Encrypted Chat Feature



Situational Awareness



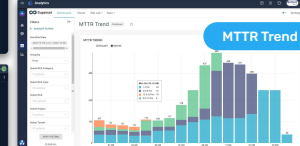
CEO Report



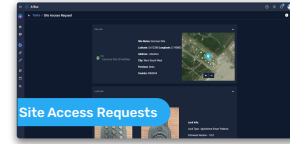
2D Digital Twins



3D Digital Twins



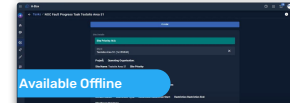
MTR Trend



Site Access Requests



Availability Dashboard



Available Offline

Drillable Digital Twins for TowerCos

2D Digital Twins

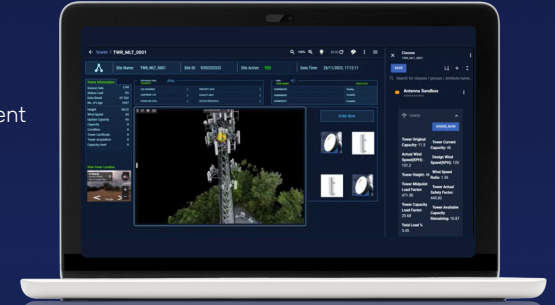
Real-time data and layers of information that are drillable into granular detail.



Semantic View & Digital Twins for TowerCos

Real-time data & visualization for:

- Customers
- Engineers
- Operations
- Asset Lifecycle Management



3D Digital Twins & Drone as a Service

Real-time data and layers of information that are drillable into granular detail.

Affectli for TowerCo Billing Solution

Our solution delivers **real-time visibility & live reporting** to meet Telco billing requirements, including Receipts & Costs.

Receipts:

- Bill Customers for:
 - Hosted equipment
 - Shared equipment
- Penalty charges per Vendor SLAs

Costs:

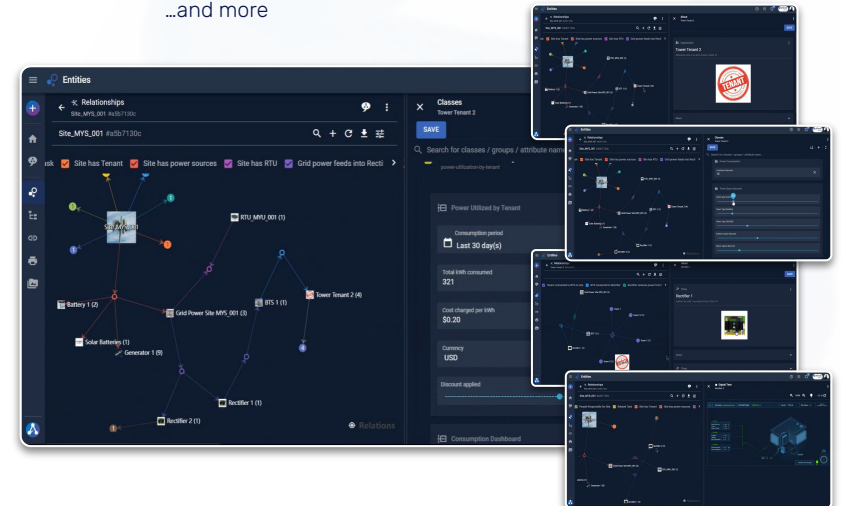
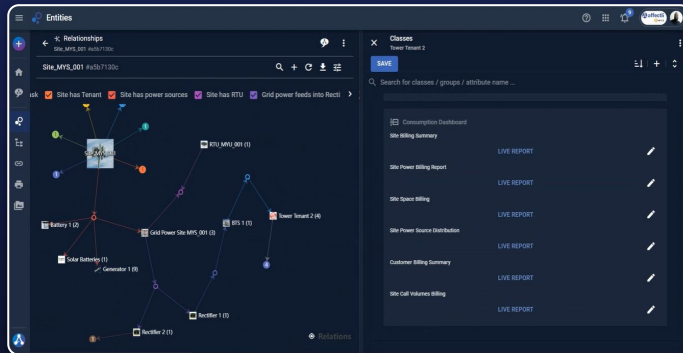
- Billing from Vendors
- Billing from Subcontractors
- Penalty charges per Vendor SLAs

Affectli Billing for TowerCos: Ontology Driven Meaningful Data

Pivot and visualise **real-time information** including:

- Per Site
- Per Tenant
- Per RTU
- Per BTS
- Per Customer
- Per Grid
- Per Generator
- Per Rectifier

...and more



Affectli Billing for TowerCos: Data Sources

Affectli provides real-time information from various Data Sources including:

Power Consumption:

- Affectli supports any RMS device using any networking protocol.

Space Utilisation:

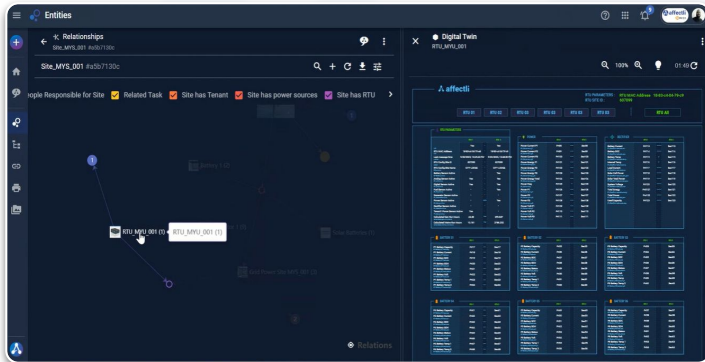
- Based on captured information such Assets, Equipment and Location.

Customer SLA Compliance:

- Using RMS Alarm data
- Tracked through NIMA (NOC Incident Management) that provides cumulative date on downtime and root cause analysis.

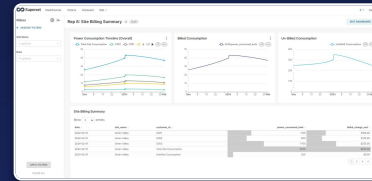
Vendor SLA Compliance:

- Extracted from Incident Management and on-site Field Services System.

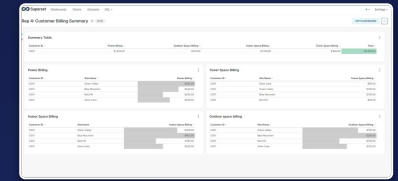


Affectli Billing for TowerCos: Granular Billing

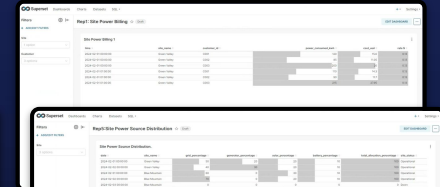
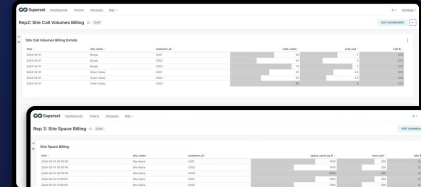
Executive Dashboards & Granular Billing with real-time information is included and covers various levels of details for both **Vendor & Subcontractor Billing** and **Customer Billing**.



Site Billing Summary



Customer Billing Summary



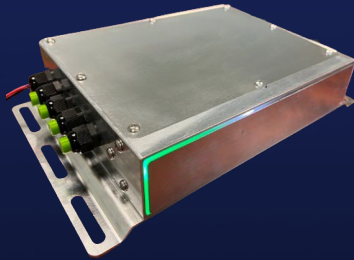
Granular Billing i.e.
Site Power, Site Call Volumes, Site Space,
Site Power Source Distribution

RMS Hardware Solutions

Affectli is device independent, but we have partnered with Tag N Go to supply market-leading hardware solutions that are designed for situations where **speed**, **quality** and **efficiency** matter.

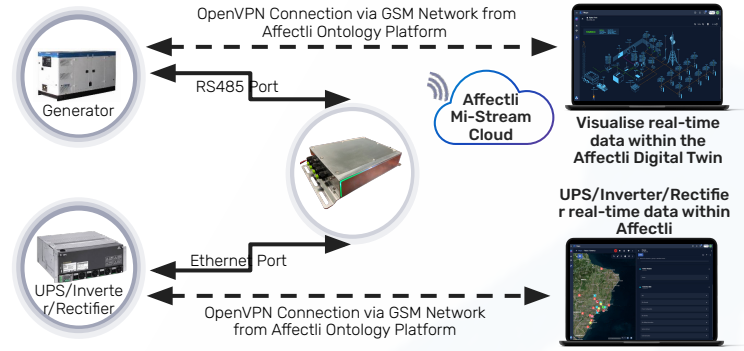


An innovative RMS solution with an on-site Virtual Technician.

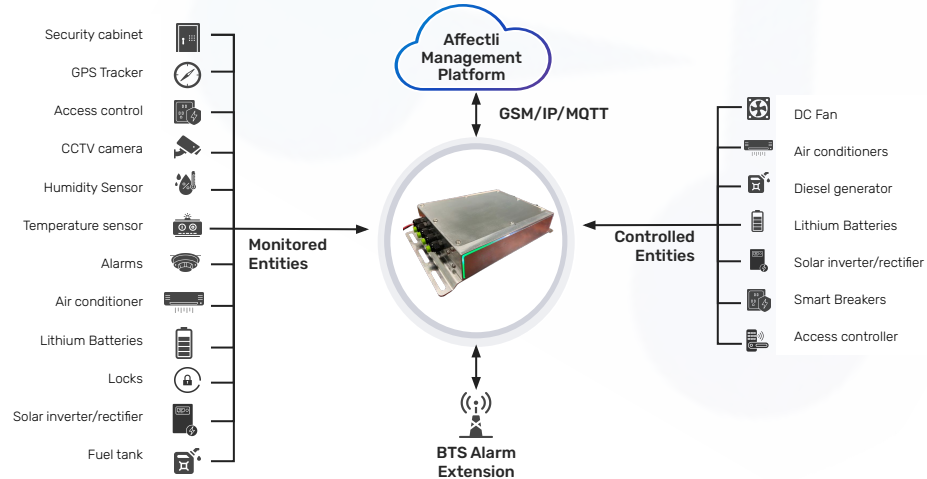


Discover operational issues and make changes to the required parts of your system without any human intervention.

Pass-through or Cut-through Operation



RMS Solution Application: Equipment Remote Monitoring & Control



Wired Peripherals & Sensors for Typical Telecom Application

Power Conversion Systems



Site Battery DPP Voltage & Current



Solar Power DPP Current & Energy



Tenant DC Load DPP Current & Energy



Lithium Ion Batteries BMS



AC Supply/Load Voltage & Current Power & Energy



IP Camera



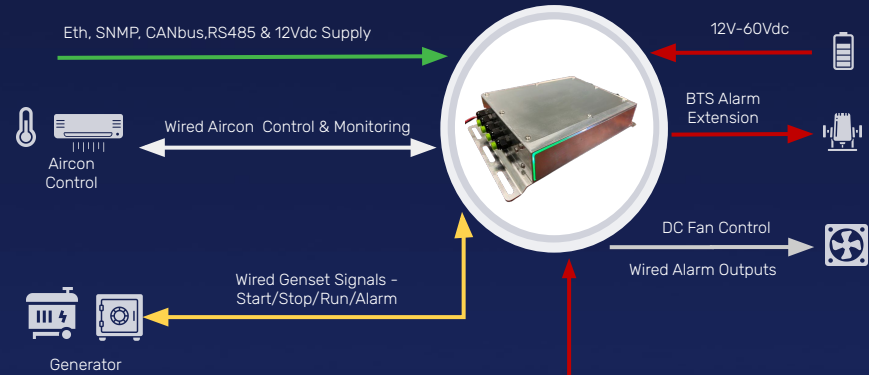
Gate/Door Access Control



Diesel Tank Fuel Level Sensor



Wired Peripherals & Sensors



- | | | | |
|--|--|--|---------------------------------|
| | Temperature & Humidity Readings & Alarms | | Smoke Sensor / Fire Panel Alarm |
| | Cabinet Door Alarms | | UPS / Inverter Alarms |
| | Surge Protection Alarms | | Motion Detector |

Proven Success : TowerCo

The Challenge

A TowerCo Client with operations in multiple countries

Our Client was faced with challenges in meeting their stringent SLA criteria that resulted in penalties with significant financial implications. This was further fuelled by their flawed computerised systems that overloaded their servers and resulted in inaccurate reporting.

Within the operations, they experienced difficulties managing theft, plus tracking & monitoring their equipment that is situated in remote locations. In addition, they faced efficiency challenges with regards to identifying problems on their sites, plus challenges in managing tenants, vendors and third-party suppliers across various sites.

The Results

"We have experienced a transformative benefit of their product ... we're more reliably and rapidly informed about the status of our assets and have reduced considerably our reaction times to deal with arising situations ..."

"Mi-C3 has provided timely delivery and high adaptability to our continually changing needs through the implementation of Affectli."

- Head of IT



**PROVEN
AT SCALE**

Grown from 11,000 sites (2016) to over **30,000 sites** (2023).

Monitoring 850,000+ endpoints & ingesting approx **1.6 million records per hour**.

Company listed on NYSE - October 2021 - (USD) \$8 Billion Market Cap.

Client Results

50%

Reduction in SLA

**Sub-Second
MTTD**

Issue Detection

20+%

ROI within 1st year

99.9%

ave. system availability

31 million

reduced emails monthly

Customer Asset Management &
Customer Billing

Site Access

Management

Maximise your efficiencies.

Get in touch

To request a demo or a tailored Affectli solution,
email contact@affectli.com
or visit our website www.affectli.com
for more information.